

1 μm
|-----|

Mag = 20.00 K X

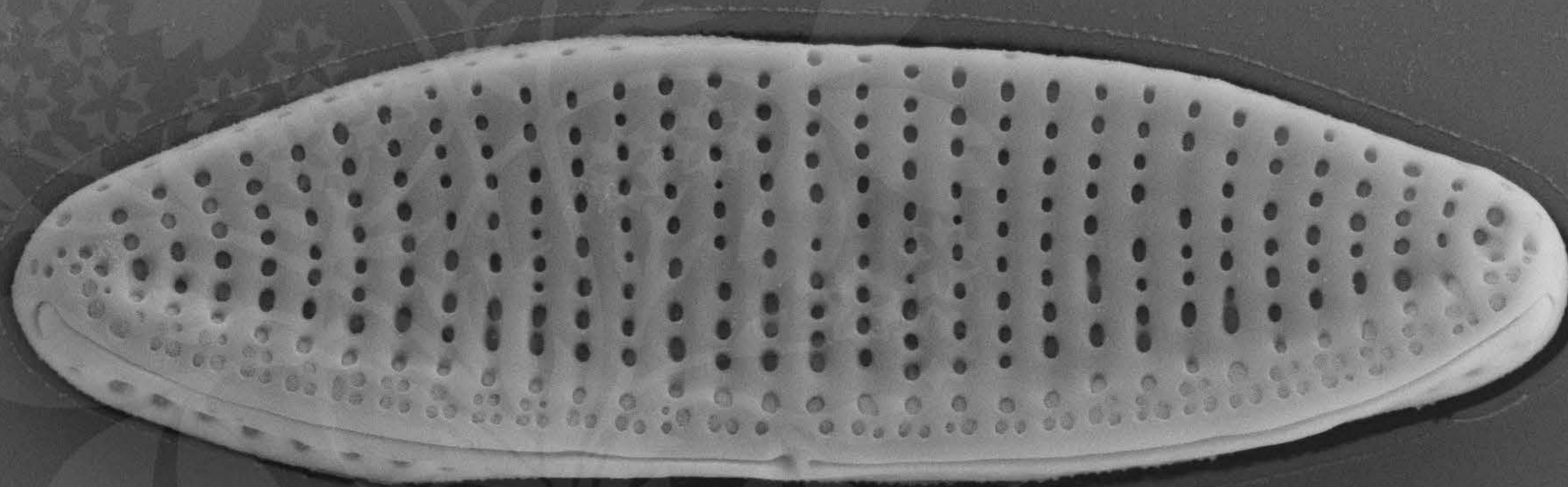
EHT = 5.00 kV

Signal A = SE2 Date :6 Jul 2015

WD = 4.4 mm

File Name = BC0501_01.tif





1 μm
|-----|

Mag = 20.00 K X

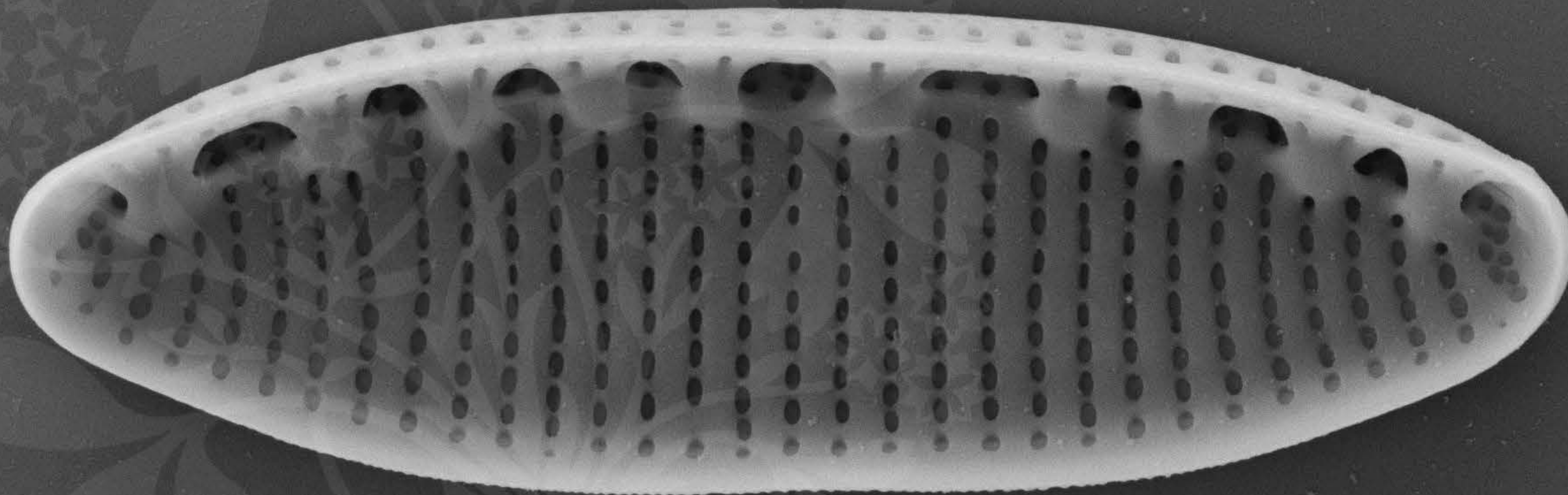
EHT = 5.00 kV

Signal A = SE2 Date :6 Jul 2015

WD = 4.4 mm

File Name = BC0501_02.tif





1 μm



Mag = 20.00 K X

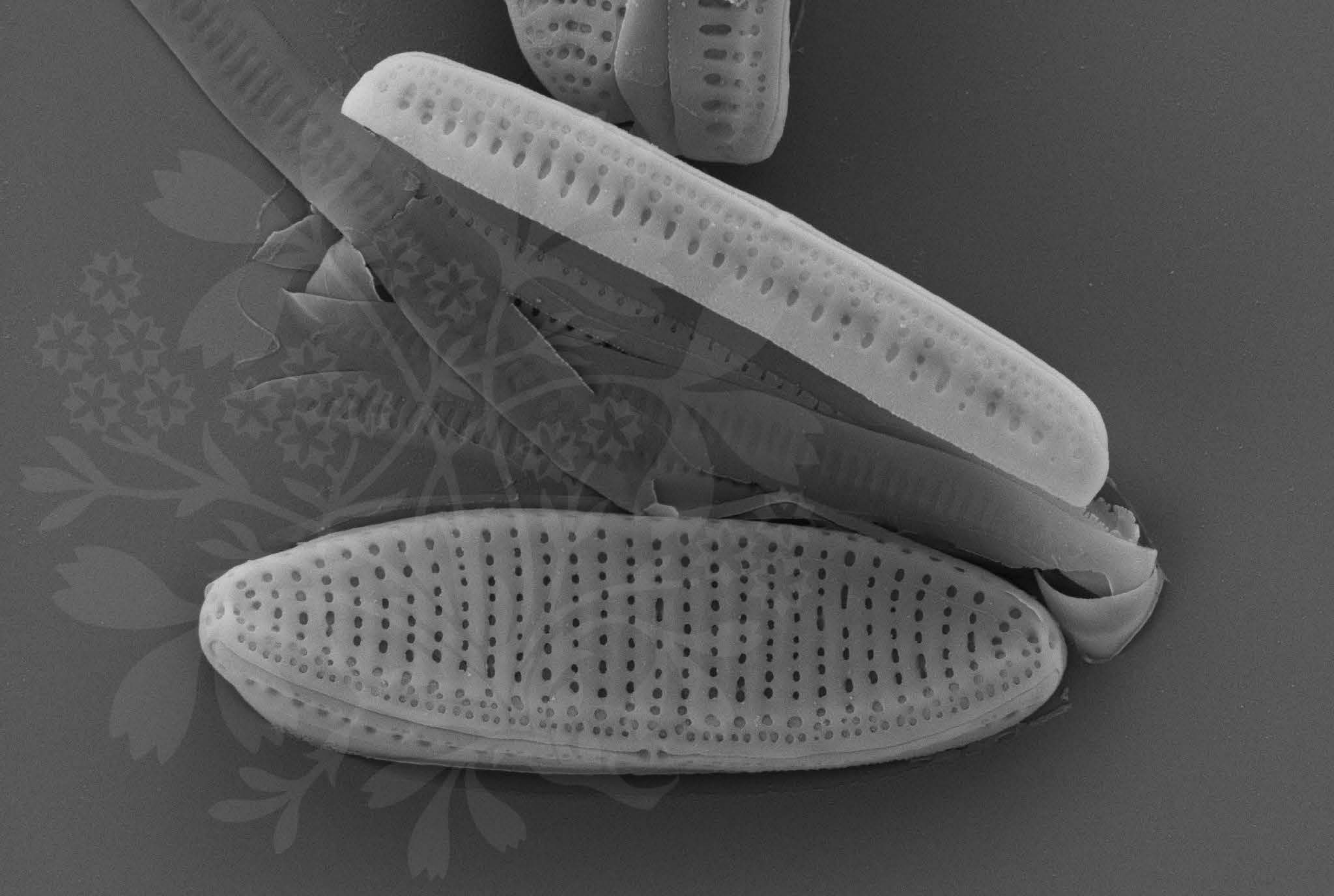
EHT = 5.00 kV

Signal A = SE2 Date :6 Jul 2015

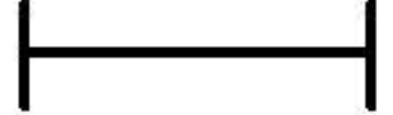
WD = 4.4 mm

File Name = BC0501_03.tif





1 μm



Mag = 16.00 K X

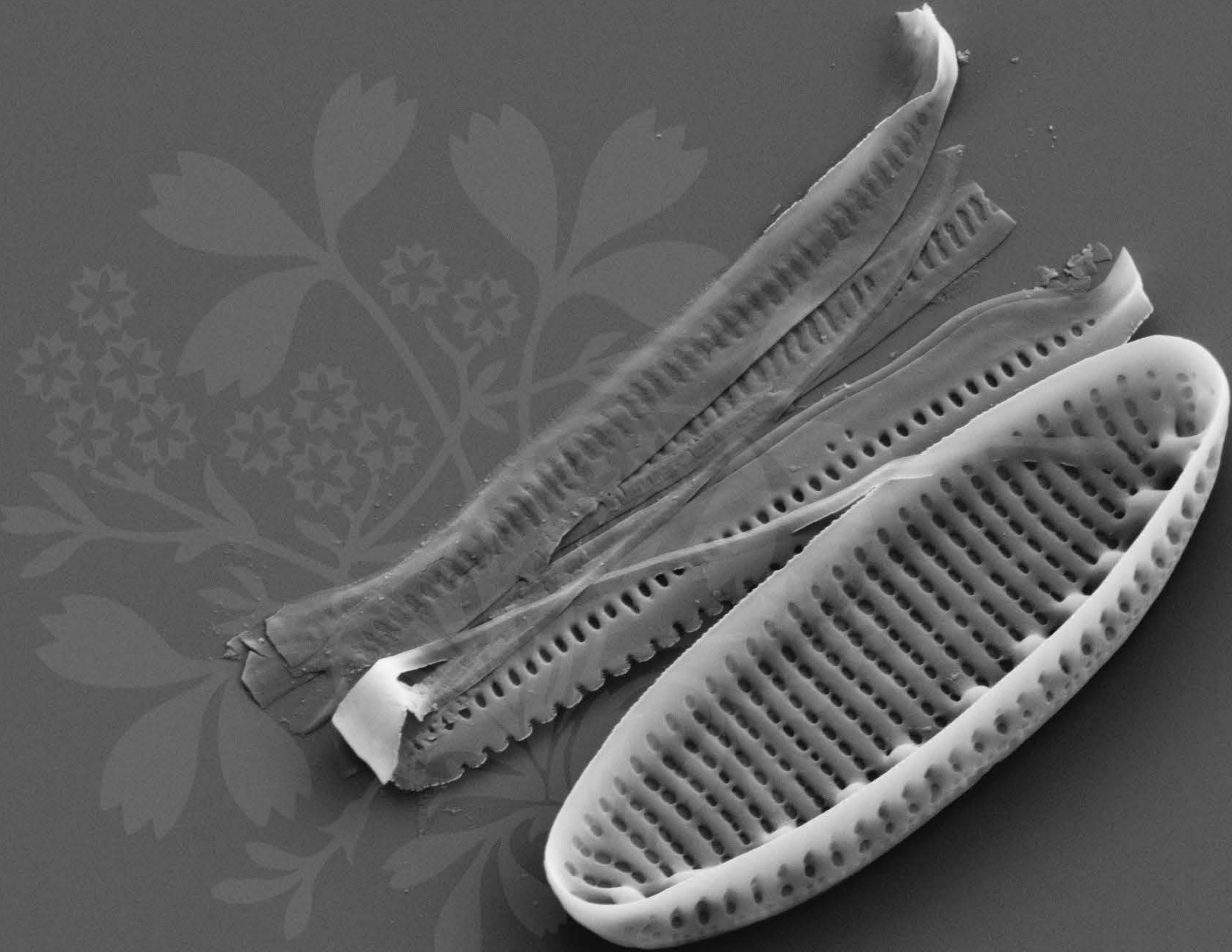
EHT = 5.00 kV

Signal A = SE2 Date :6 Jul 2015

WD = 4.4 mm

File Name = BC0501_04.tif





1 μm

Mag = 15.00 K X

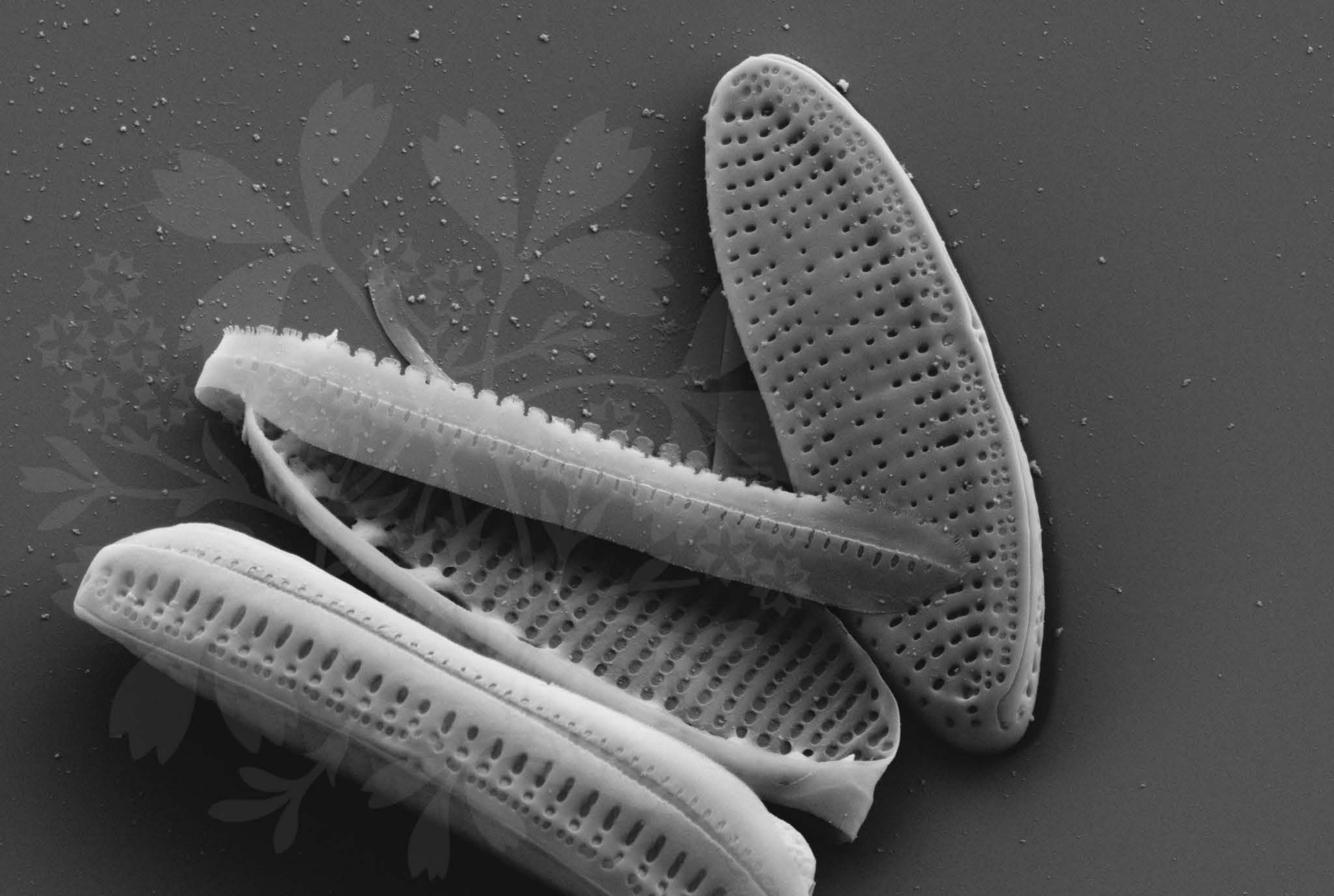
EHT = 5.00 kV

Signal A = SE2 Date : 3 Nov 2015

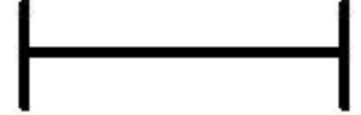
WD = 4.3 mm

File Name = BC0501_05.tif





1 μm



Mag = 15.00 K X

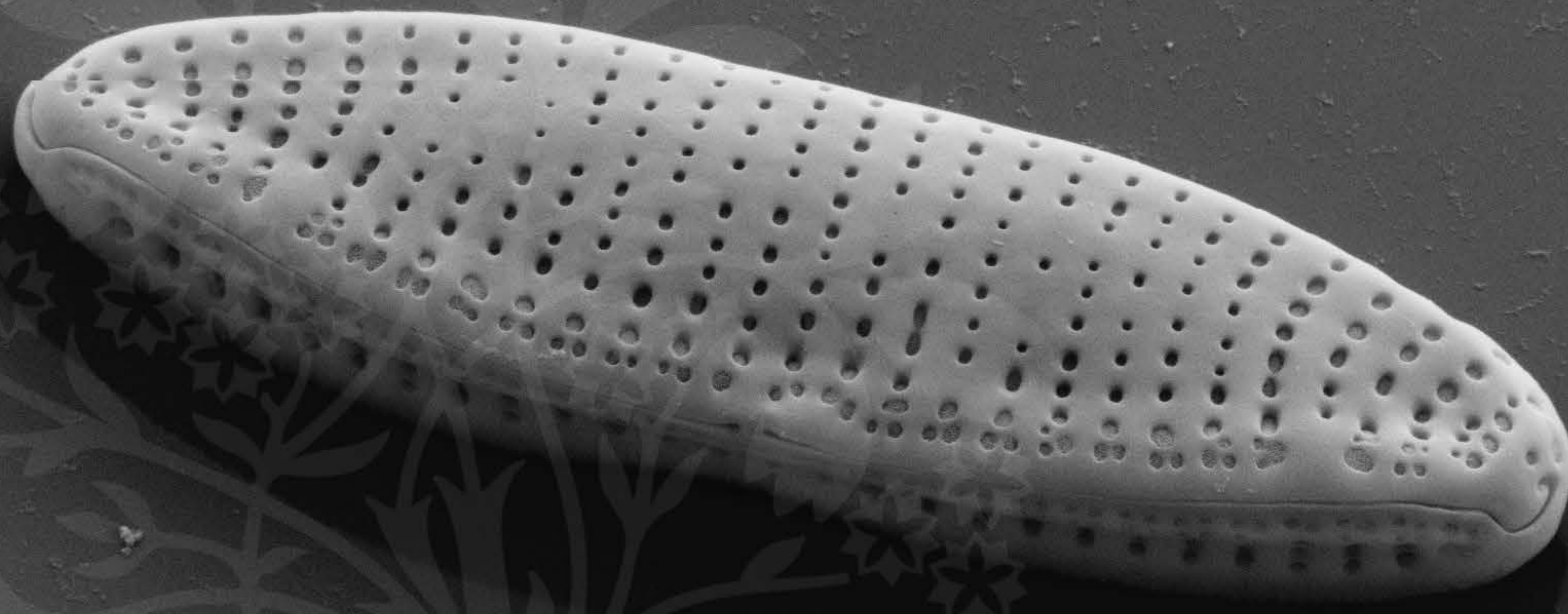
EHT = 5.00 kV

Signal A = SE2 Date : 3 Nov 2015

WD = 4.3 mm

File Name = BC0501_06.tif





1 μ m



Mag = 20.00 K X

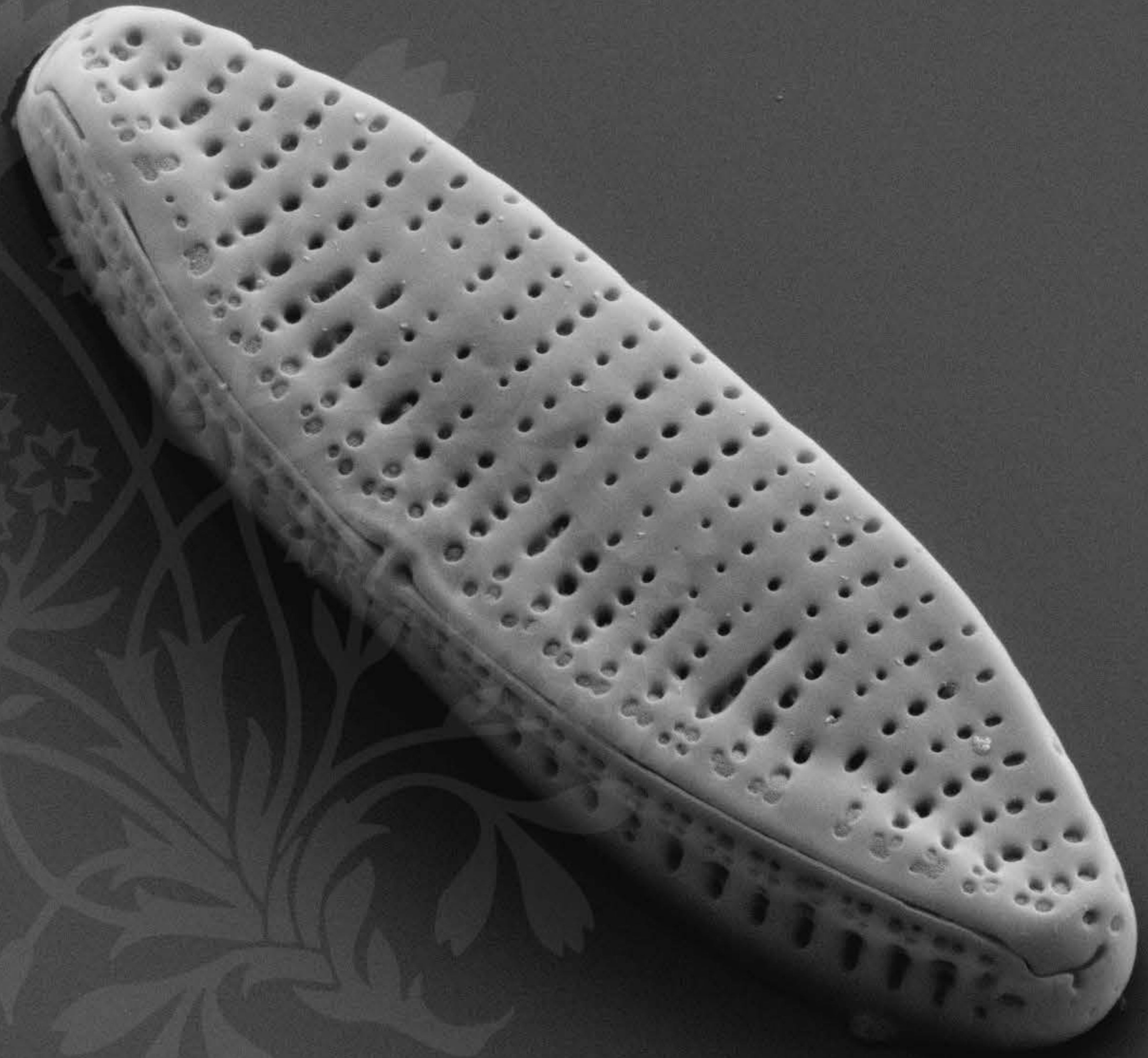
EHT = 5.00 kV

Signal A = SE2 Date :3 Nov 2015

WD = 4.3 mm

File Name = BC0501_07.tif





1 μm
|-----|

Mag = 20.00 K X

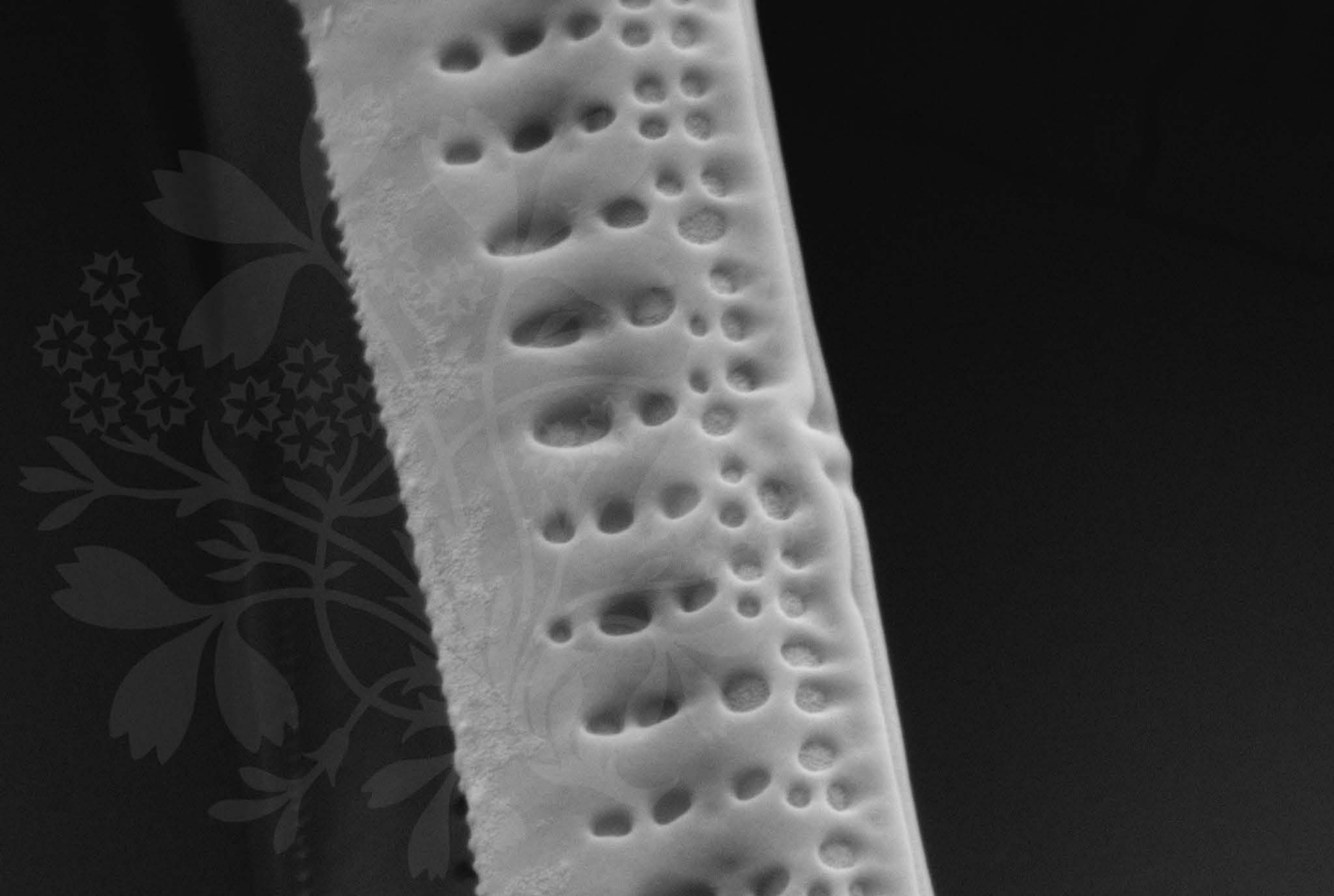
EHT = 5.00 kV

Signal A = SE2 Date : 3 Nov 2015

WD = 4.3 mm

File Name = BC0501_08.tif





100 nm



Mag = 60.00 K X

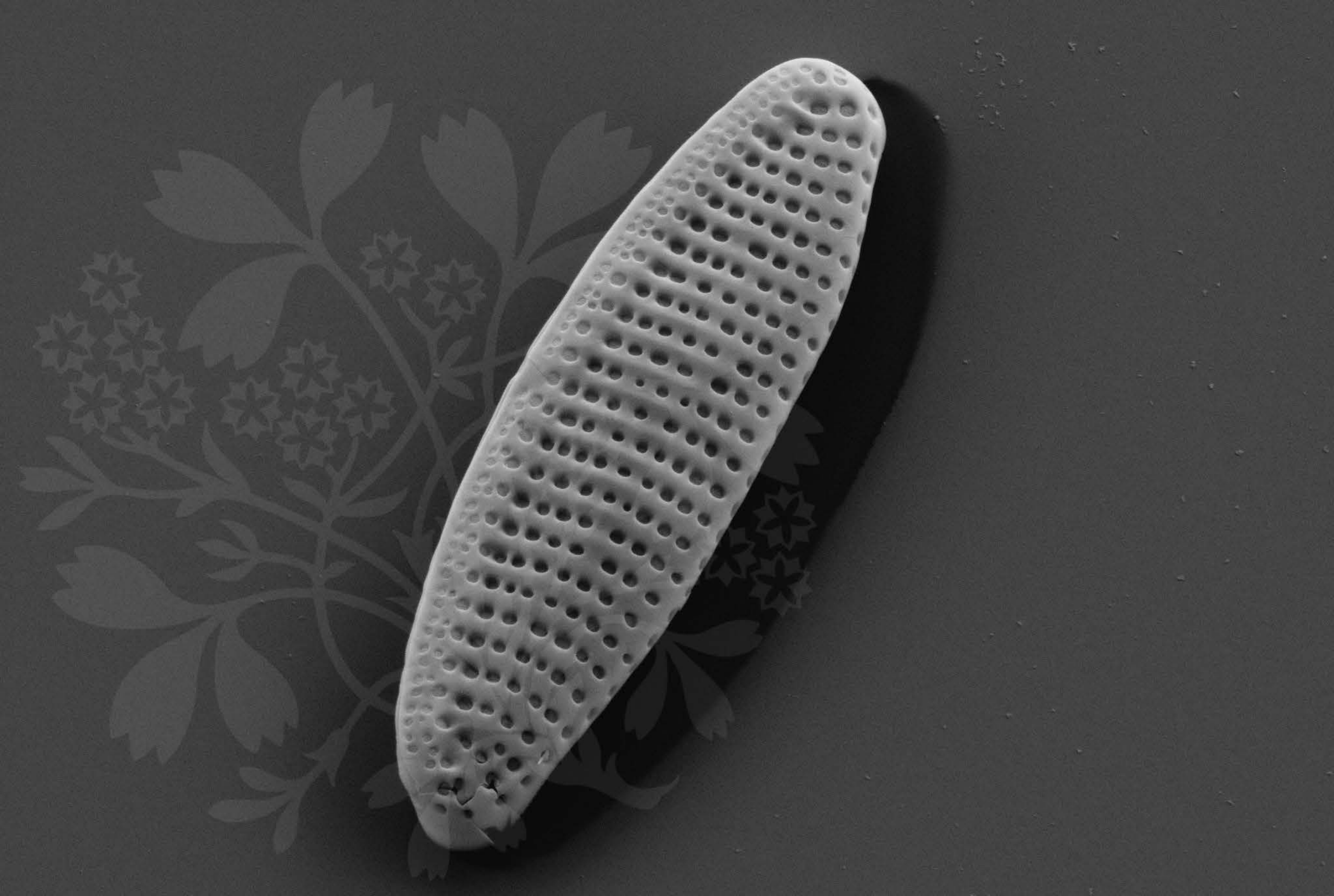
EHT = 5.00 kV

Signal A = SE2 Date :3 Nov 2015

WD = 4.3 mm

File Name = BC0501_09.tif





1 μm
|-----|

Mag = 18.00 K X

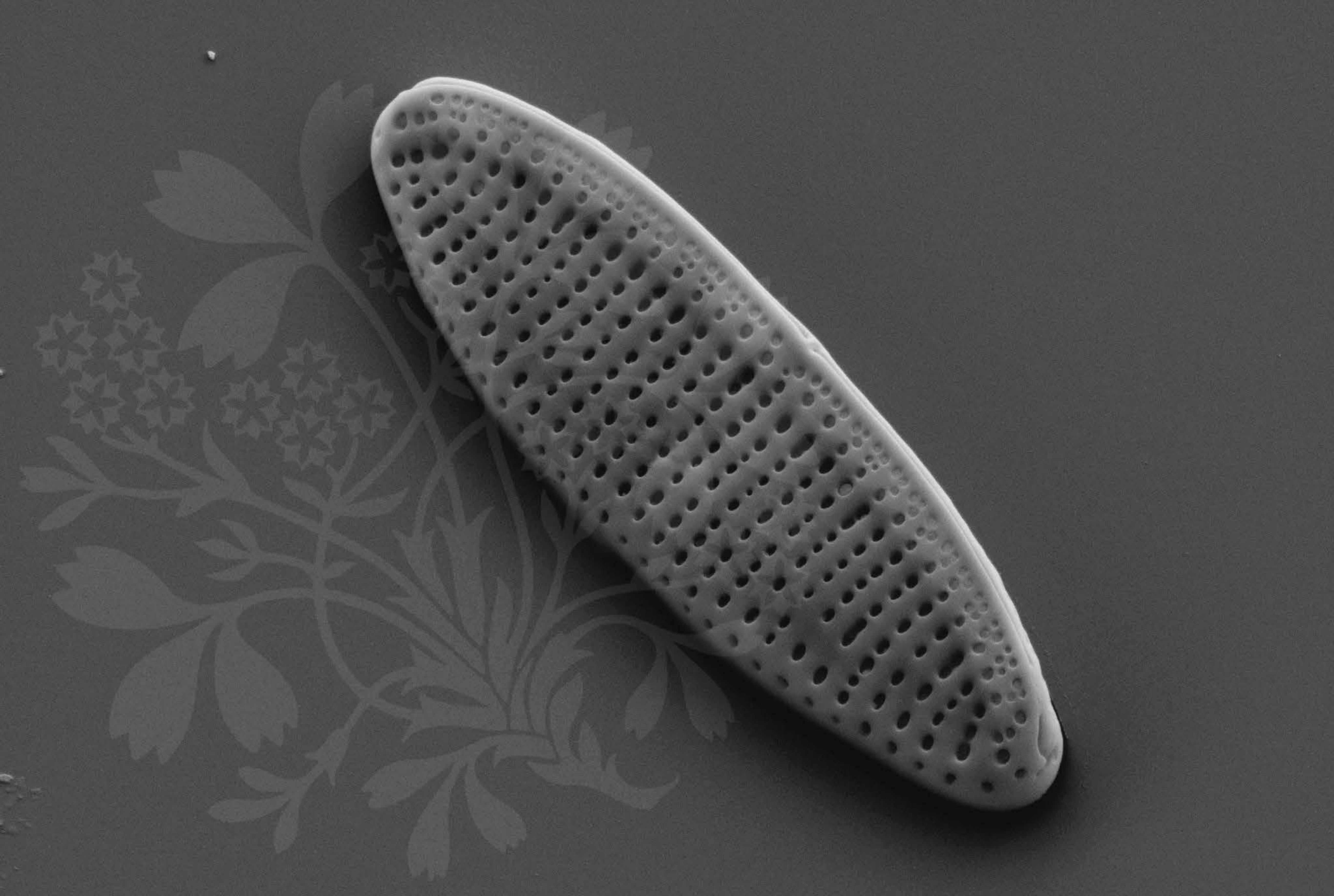
EHT = 5.00 kV

Signal A = SE2 Date : 3 Nov 2015

WD = 4.3 mm

File Name = BC0501_10.tif





1 μm
|-----|

Mag = 18.00 K X

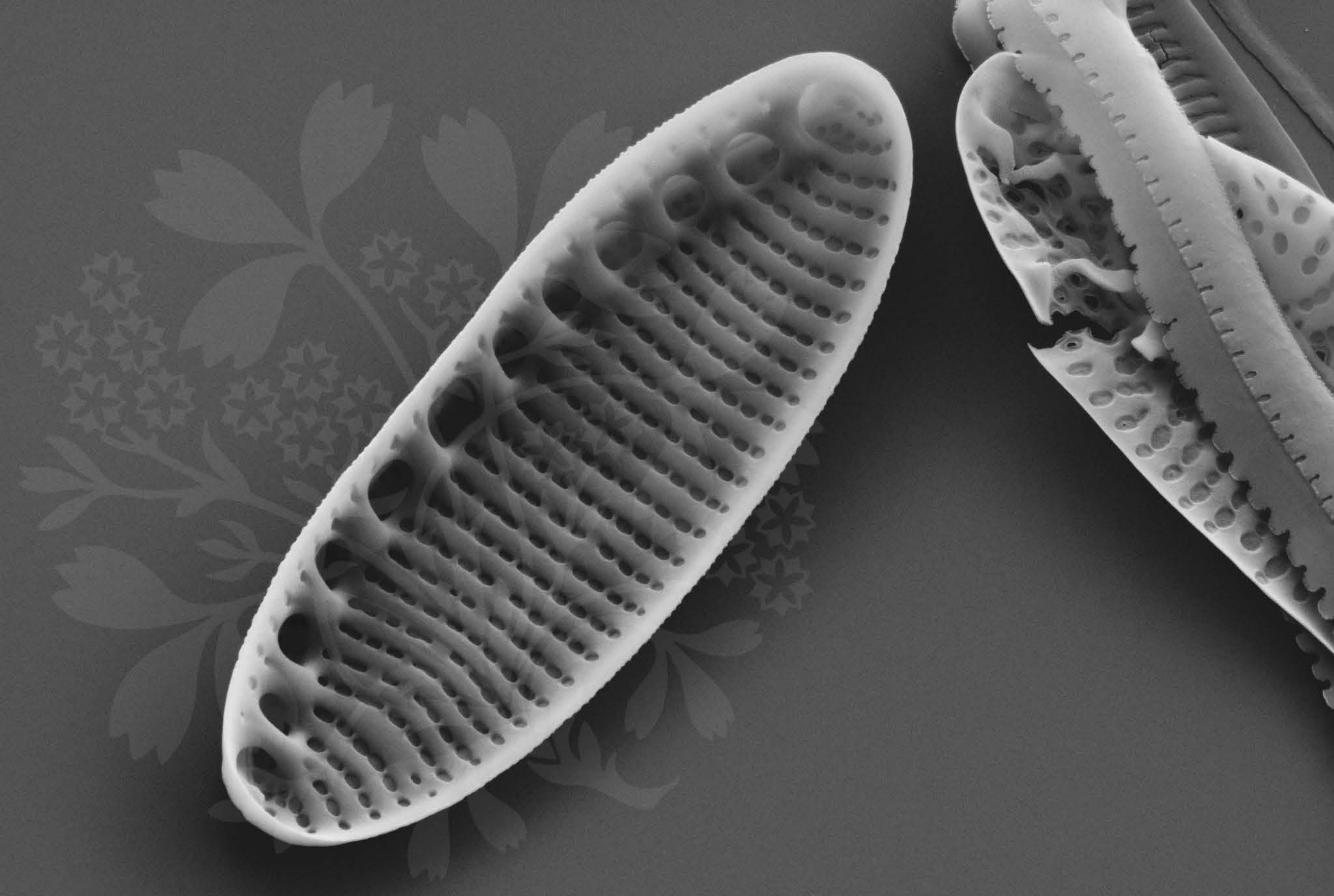
EHT = 5.00 kV

Signal A = SE2 Date : 3 Nov 2015

WD = 4.3 mm

File Name = BC0501_11.tif





1 μm
|-----|

Mag = 20.00 K X

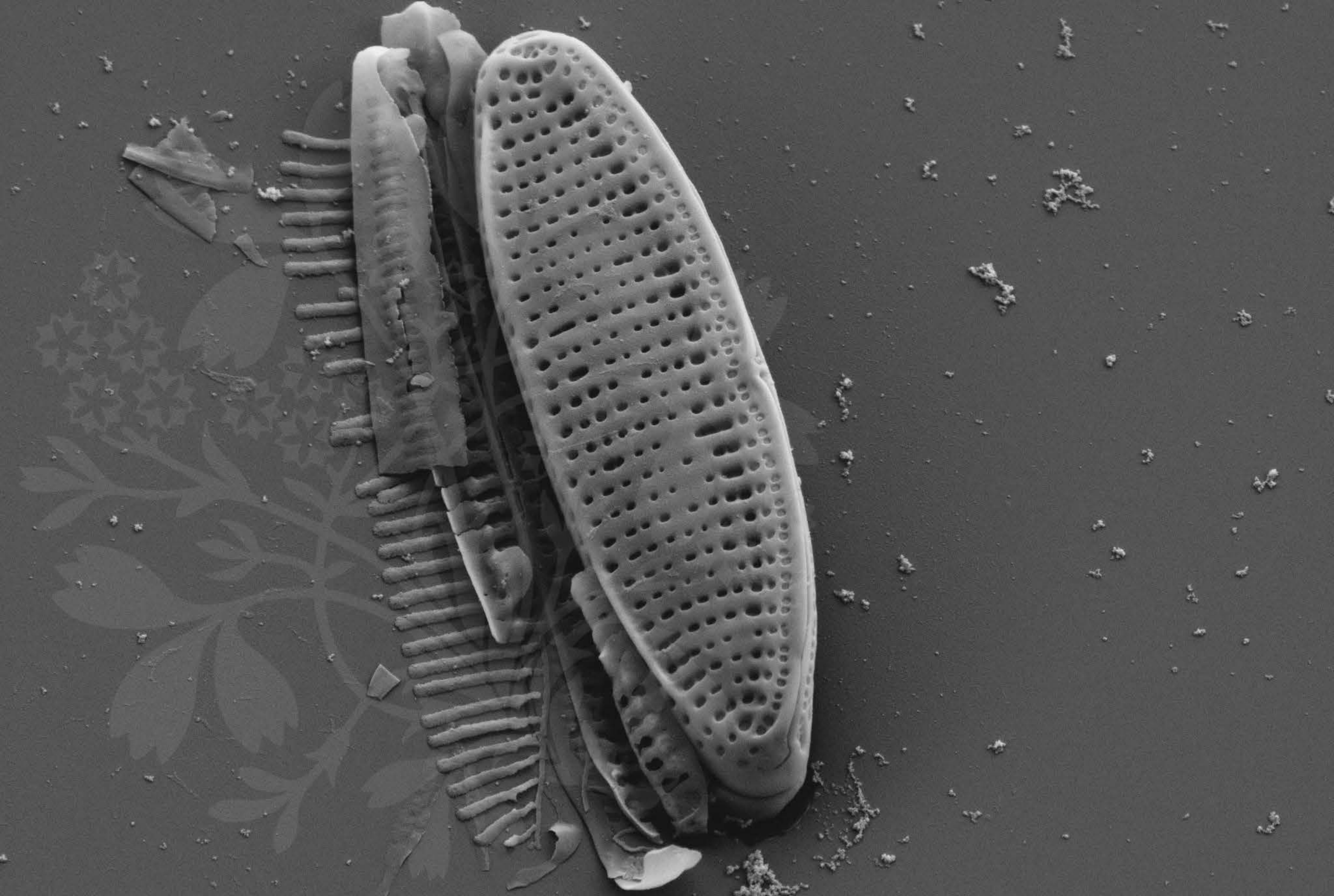
EHT = 5.00 kV

Signal A = SE2 Date : 3 Nov 2015

WD = 4.3 mm

File Name = BC0501_12.tif





1 μ m
|-----|

Mag = 14.65 K X

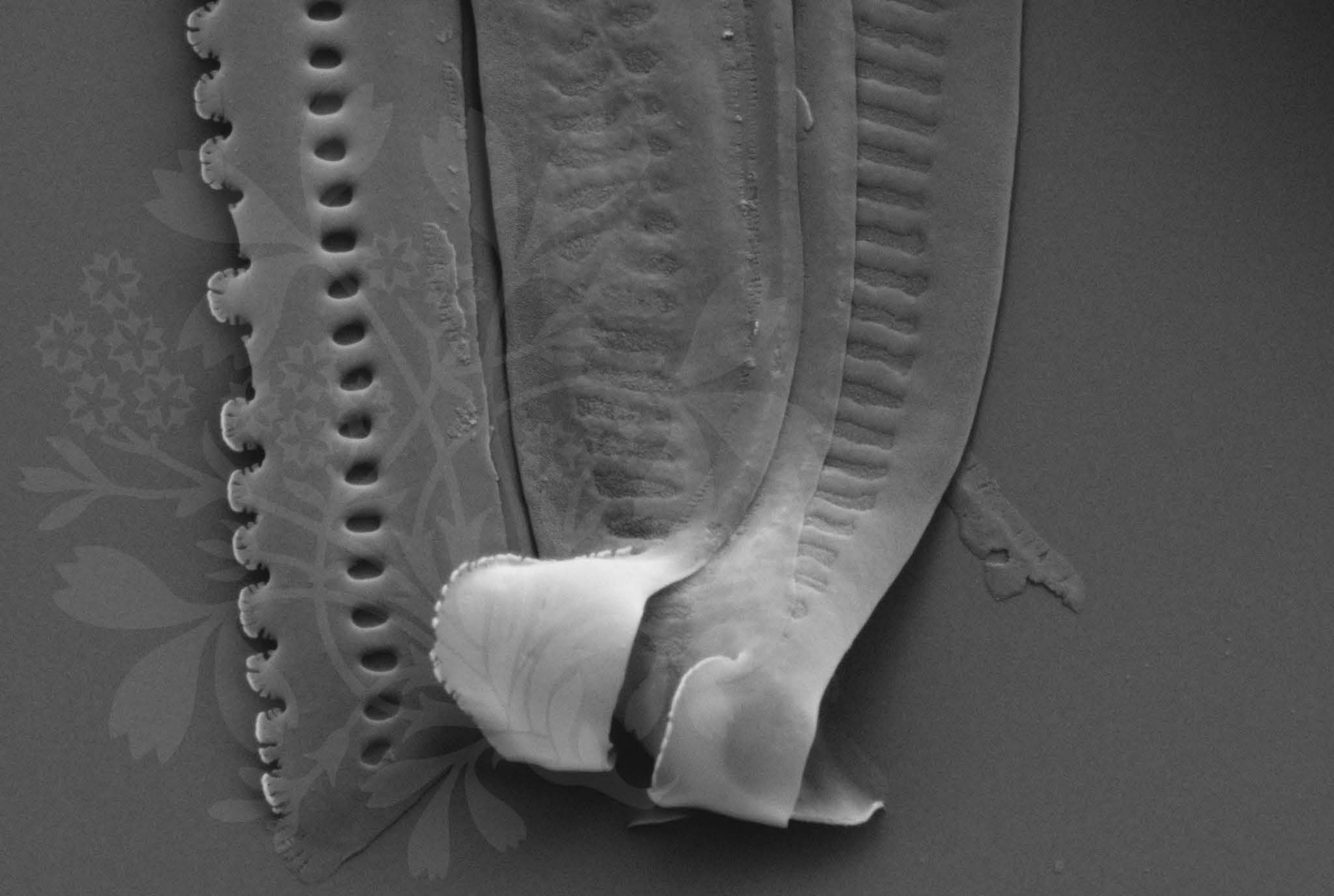
EHT = 5.00 kV

Signal A = SE2 Date : 3 Nov 2015

WD = 4.3 mm

File Name = BC0501_13.tif





200 nm
┌───┐

Mag = 40.00 K X

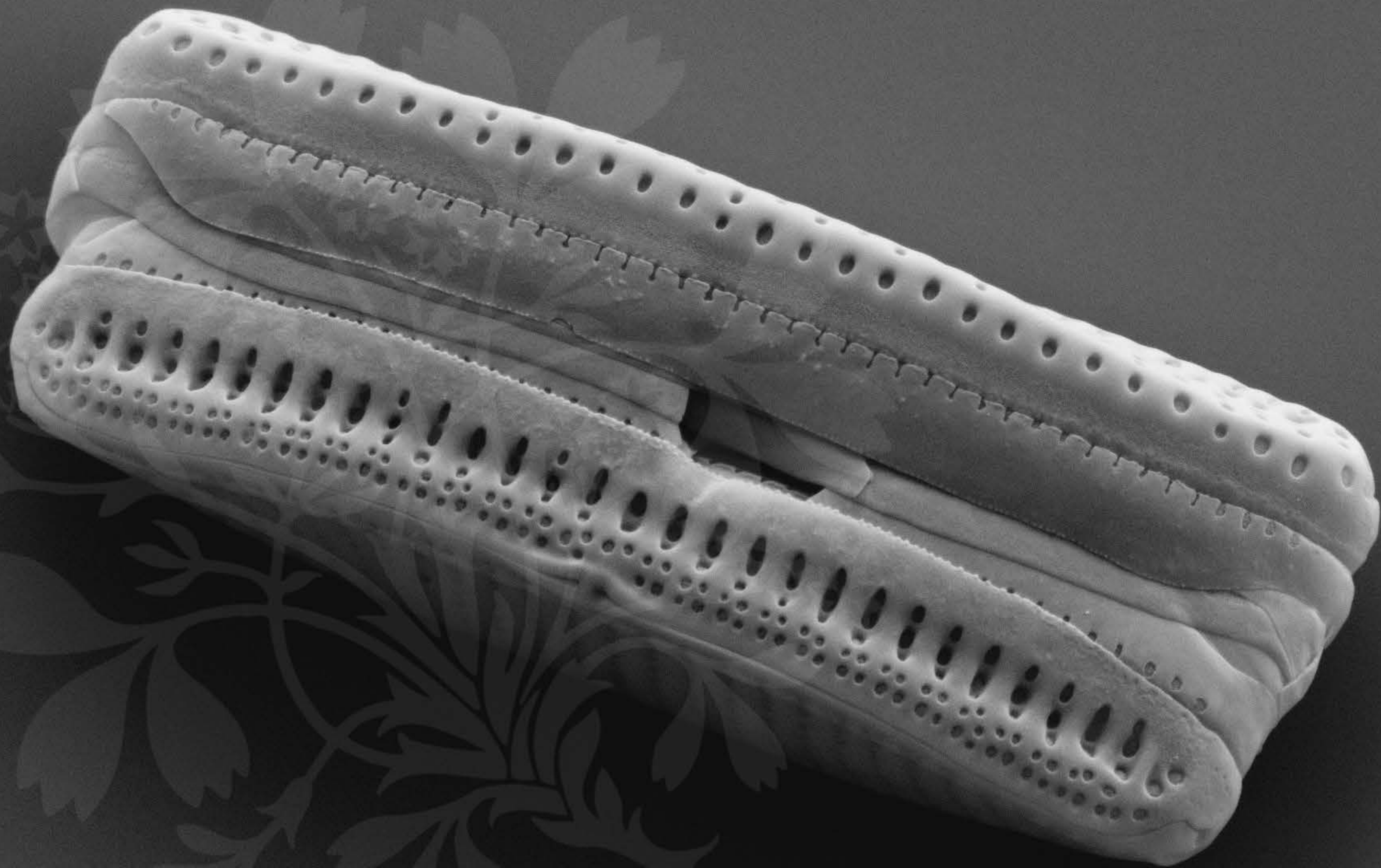
EHT = 5.00 kV

Signal A = SE2 Date : 3 Nov 2015

WD = 4.3 mm

File Name = BC0501_14.tif





1 μm
|-----|

Mag = 20.00 K X

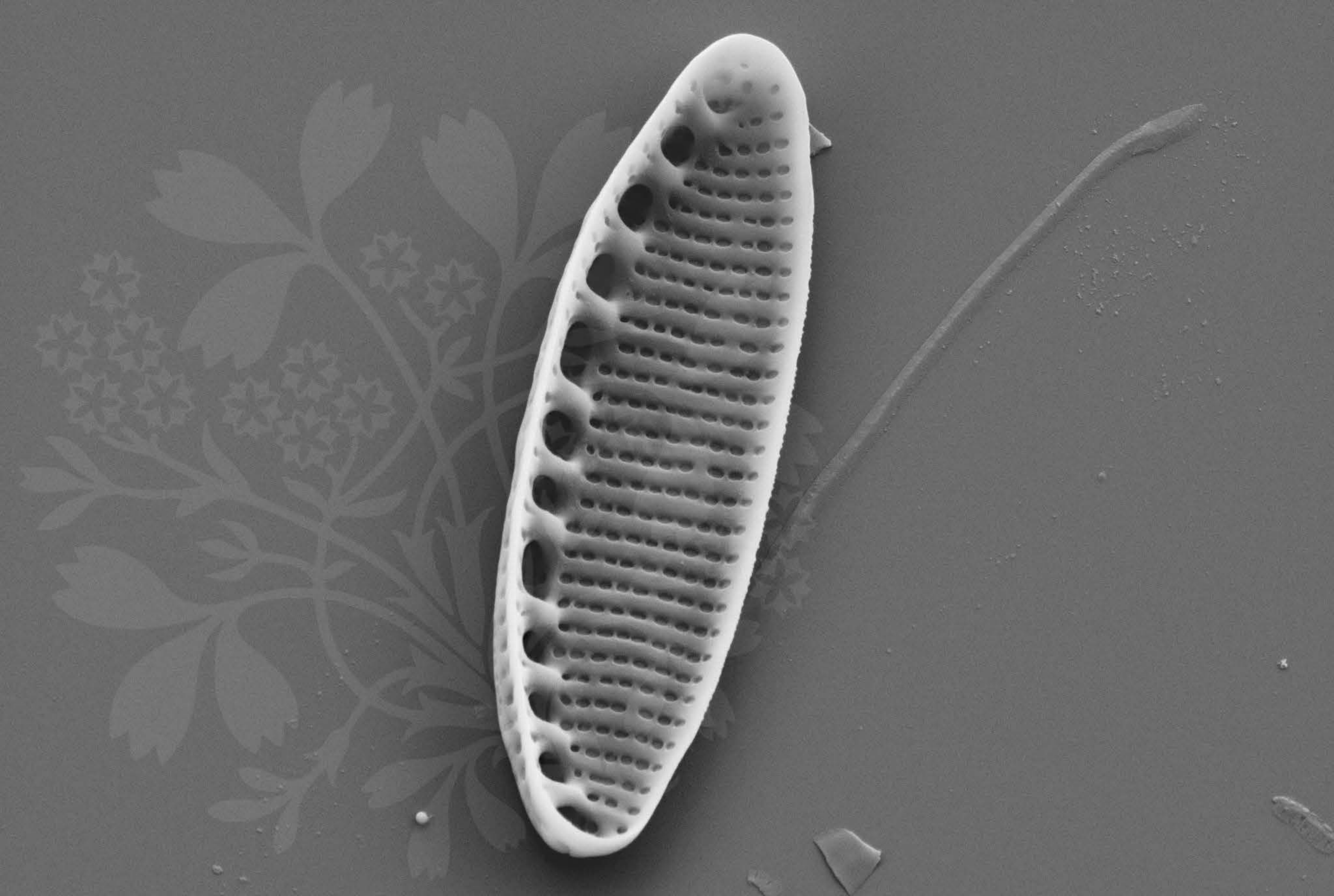
EHT = 5.00 kV

Signal A = SE2 Date : 3 Nov 2015

WD = 4.3 mm

File Name = BC0501_15.tif





1 μm
|-----|

Mag = 16.00 K X

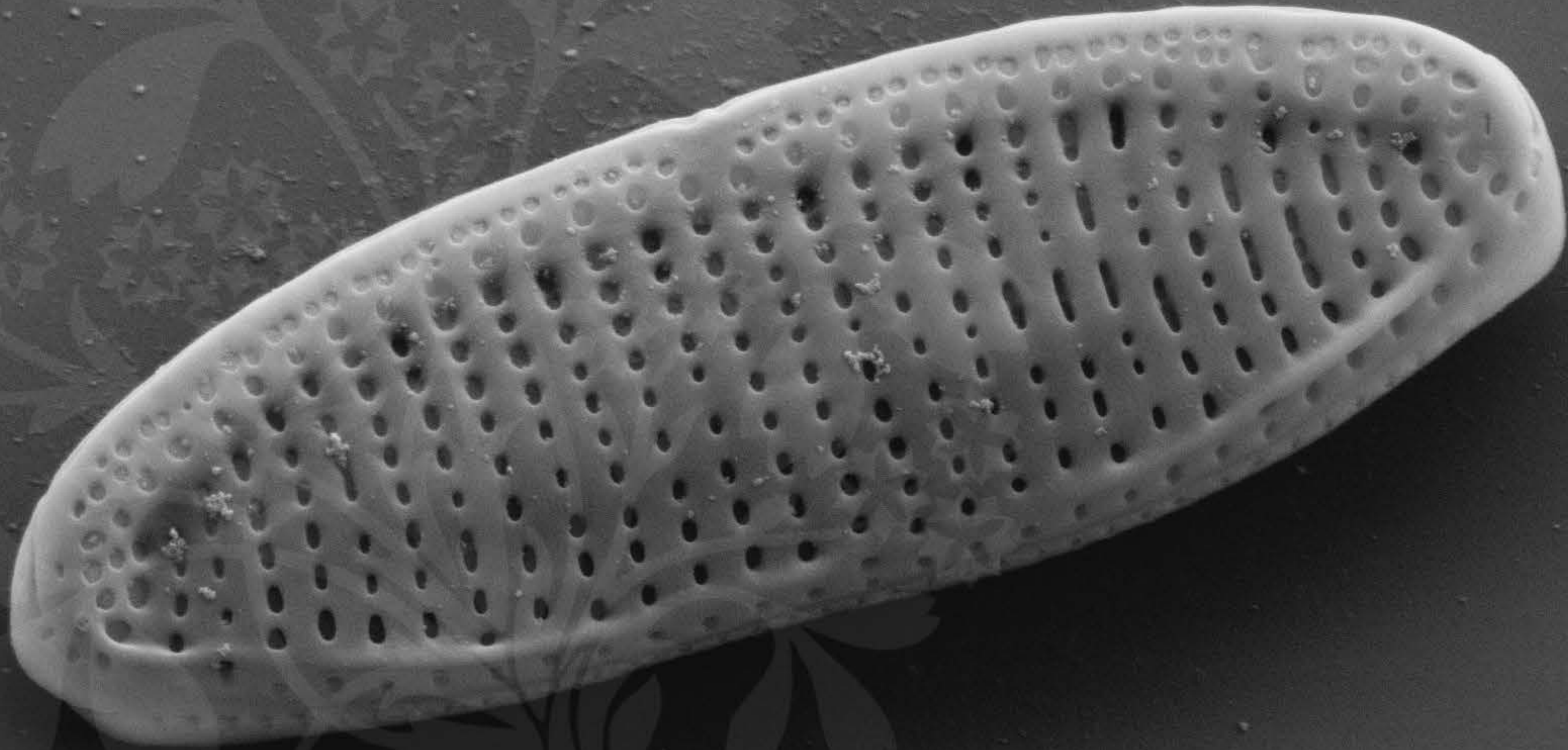
EHT = 5.00 kV

Signal A = SE2 Date :3 Nov 2015

WD = 4.3 mm

File Name = BC0501_16.tif





1 μm
|-----|

Mag = 20.00 K X

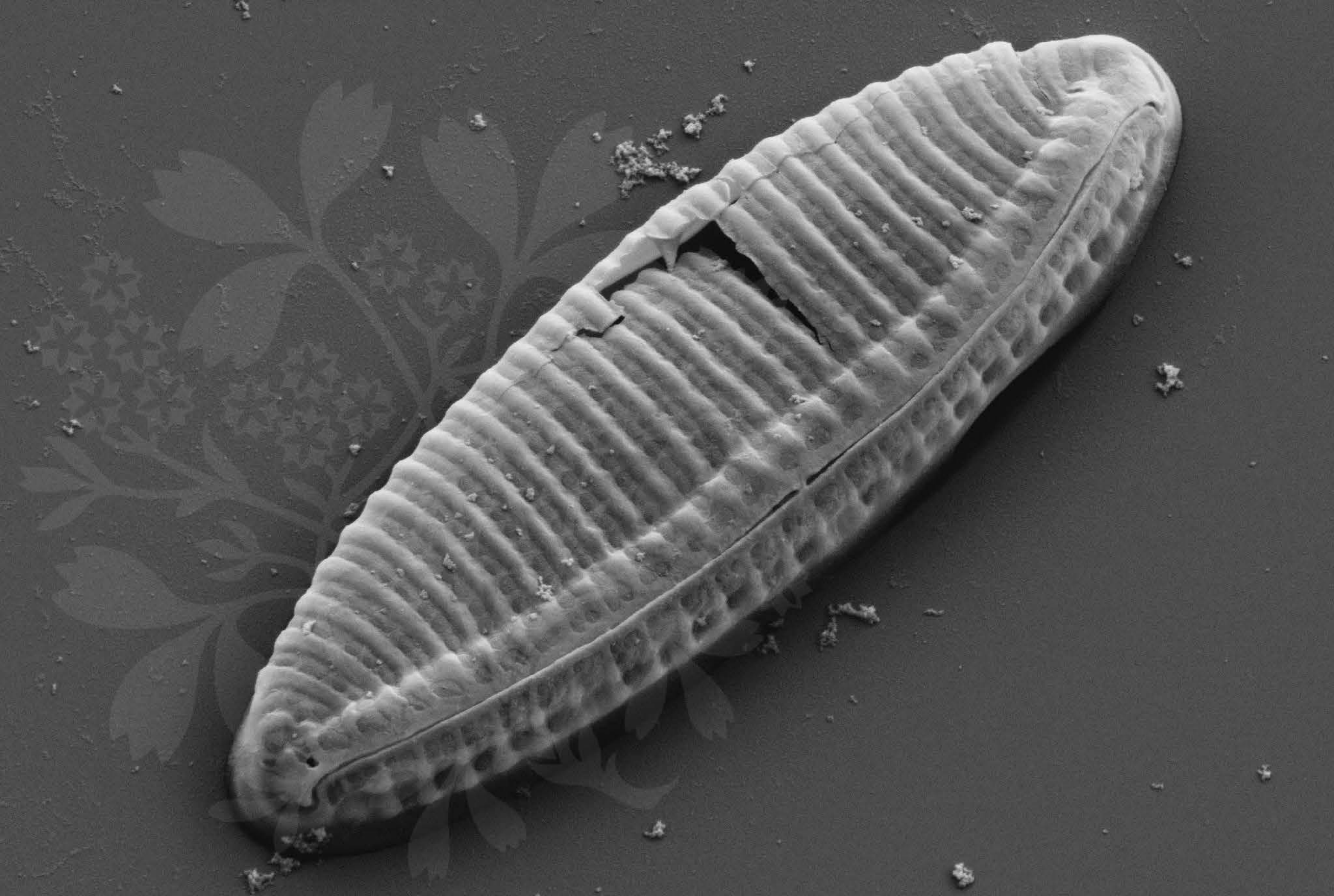
EHT = 5.00 kV

Signal A = SE2 Date :3 Nov 2015

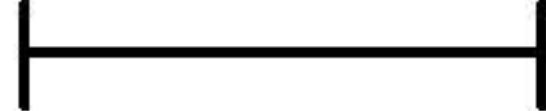
WD = 4.3 mm

File Name = BC0501_17.tif





1 μ m



Mag = 24.00 K X

EHT = 5.00 kV

Signal A = SE2 Date :3 Nov 2015

WD = 4.3 mm

File Name = BC0501_18.tif

